

# 42007-2629 QDI PRE-EXPORT CHECKS

Specification for the addition of a way to generate the log messages without actually exporting the data

<b>Project:</b>	42007
<b>System:</b>	QESTMix
<b>Author:</b>	Lief Martin
<b>Date Created:</b>	13 April 2006
<b>Date Last Modified:</b>	3 May 2006
<b>Revision:</b>	1.0
<b>Filename:</b>	42007-2629 qdi pre-export checks.mht

## DOCUMENT CONTROL

Date	Author	Revision	Change Reference
27 April 2006	Lief Martin	1.0	Original Document

## RELATED DOCUMENTATION

Name	Location	Details

## TABLE OF CONTENTS

1. Business Requirements.....	1
1.1 Overview.....	1
2. Functional Requirements .....	1
2.1 Overview.....	1
2.2 Core Changes to QDI.....	2
2.3 Mapping File Changes.....	2
2.4 QESTMix User Interface Changes.....	2
2.5 QDI Custom Function Changes.....	3
3. Assumptions and Additional Constraints .....	3

## 1. Business Requirements

### 1.1 Overview

Currently, errors/warnings are generated during the QDI export, and can be emailed back to the user initiating the export. Sometimes this results in the need to change some data, and run the export again. In between the two exports, this can mean that the data in the external system is incorrect.

This specification covers a way of generating the warning messages without actually exporting the data, i.e. a "dummy run" to be done of the export. This will allow users to confirm that the data to be exported passes all checks carried out during the export, without actually changing any data.

## 2. Functional Requirements

### 2.1 Overview

The main changes that will be required are that support for the "dummy run" needs to be added to the QDI. This will involve changes to the core product.

Next, we need to add to the user interface for exporting data so that the user can indicate that they wish to initiate a dummy run.

Finally, we need to review the custom functions used for each export, and ensure that all of them will also support the dummy run. This basically means making sure that none of them change anything in the database, or write directly to the output file.

To summarise, during a dummy run, there should be no changes whatsoever to the data, and no export files generated. The only files that should be changed/created are the log files, which should behave as normal.

## 2.2 Core Changes to QDI

Support for new export mapping file option will be added to the export class, *AbortExportOverride*. This option is intended to be able to be used to create mapping files which do not export any data at all (by setting the option to *True*), and will also allow the use of *substitutions* (data that is passed in through the Queue file to replace mapping file values), to create mapping files that can export data, or abort the export of data, depending on the value passed in. This will be exposed on the Export class as a boolean value, defaulting to *False* (indicating that exporting of the data will not be overridden).

The *AbortExportOverride* flag will need to be supported in several locations in the export class. The main changes are:

- Needs to disable writing to the output file in the *Export.Update* routine
- Need to disable the creation/deletion of *flag files*.
- Need to prevent the *FTP Upload* and *Release Queue* from being applied.

Note: the QDI changes do not need to handle the disabling of the marking queries. These are triggered by specific queue files, which should simply not be created if they are not meant to be run.

The logging also should be adjusted to indicate that the data is not being exported. If the *AbortExportOverride* flag is set, a line indicating that this is the case will be added near the beginning of the log. An example of the output expected for a successful dummy run (i.e. with no errors) is shown below.

```
14:09:27 -----
14:09:27 MAPPING INFORMATION STORED IN: 'C:\QEST\QDI\QDI_Export_ProductLocation_Command.qes'
14:09:28 EXPORTING DATA TO: 'C:\QEST\QDI\Export\NM_ILOC_20060427_140928_001_SPECTRA_QEST.in'
14:09:28 EXPORT TEST RUN, GENERATING LOG FILE ONLY
14:09:28 STARTING DATA EXPORT PROCESS AT: 27/04/2006 2:09:28 PM
14:09:28
14:09:28 TOTAL RECORDS RETURNED BY QUERY: 1
14:09:28 ENDING DATA EXPORT PROCESS AT: 27/04/2006 2:09:28 PM
14:09:28 -----
14:09:28
```

## 2.3 Mapping File Changes

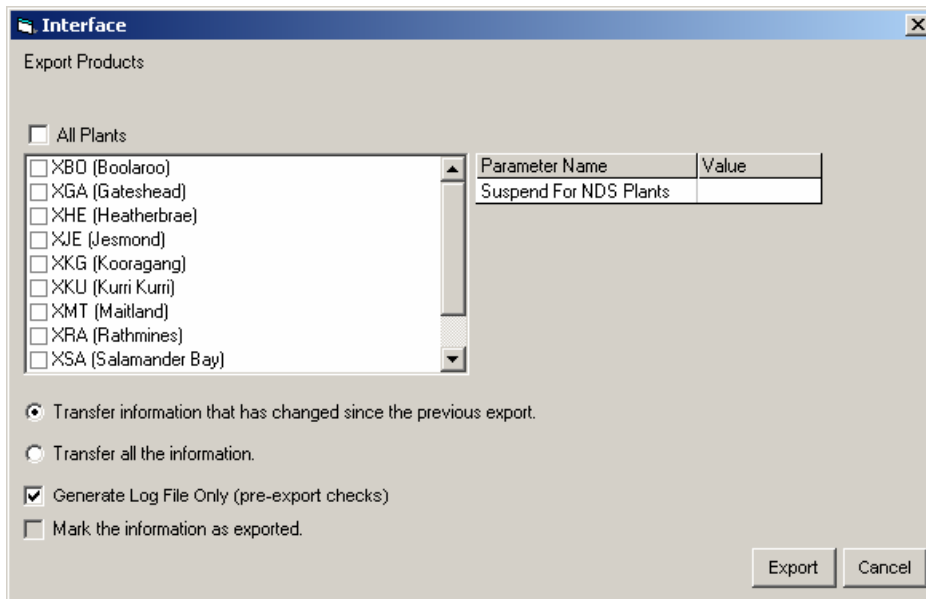
Each of the export mapping files will need to have the *AbortExportOverride* property added. This should be added as a substitution item so that the value can be passed in from QESTMix.

Note: It is important that all mapping files are correctly changed. Any that do not support the substitution will be triggered anyway, and will export as normal.

## 2.4 QESTMix User Interface Changes

The export dialog will need a new checkbox added. This will only be enabled when one (or more) of the mapping files supports the *AbortExportOverride* flag as a substitution. When this checkbox is selected, the *Mark Records as Exported* option will not be available.

The code used to generate the queue files will need to be changed to include the *AbortExportOverride* substitution flag in the queue file, and if the checkbox is selected the queue files to initiate the marking queries should not be created.



## 2.5 QDI Custom Function Changes

A thorough code review needs to be carried out to ensure that there are no cases where data will be updated/exported during a custom function when the *AbortExportOverride* flag is set. The most common cases that should be checked for are things like the *water* rows in the ICST export, where an extra row is generated as a part of the custom function.

## 3. Assumptions and Additional Constraints

(none)